



Greater Sage-Grouse

Volume 2: Appendix 1. Maps
Part 1: Maps 1.1a, b, and c

Draft Resource Management Plan Amendment and Environmental Impact Statement



The Bureau of Land Management's multiple-use mission is to sustain the health and productivity of the public lands for the use and enjoyment of present and future generations. The Bureau accomplishes this by managing such activities as outdoor recreation, livestock grazing, mineral development, and energy production, and by conserving natural, historical, cultural, and other resources on public lands.

Cover Photo: Steve Ting

Lower Bar Photos (L to R):

US Fish and Wildlife, Rachel Woita, James Yule

Appendix I

Maps

This page intentionally left blank.

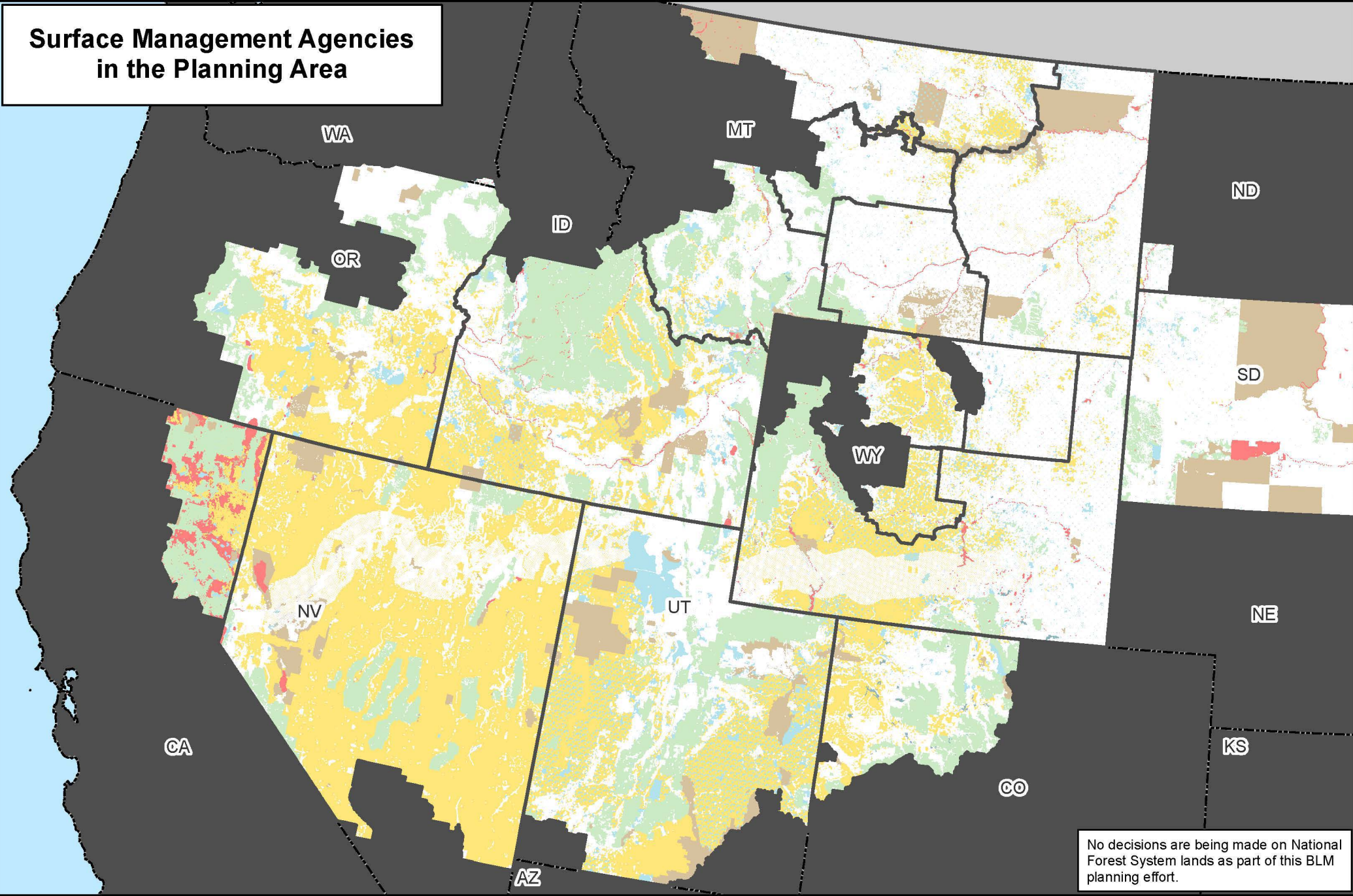
Appendix I. Maps

- 1.1 Greater Sage-Grouse West-Wide Planning Area
- 2.1 Greater Sage-Grouse Habitat Management Areas, Alternative 1
- 2.2 Greater Sage-Grouse Habitat Management Areas, Alternative 2
- 2.3 Greater Sage-Grouse Habitat Management Areas, Alternative 3
- 2.4 Greater Sage-Grouse Habitat Management Areas, Alternative 4
- 2.5 Greater Sage-Grouse Habitat Management Areas, Alternative 5
- 2.6 Greater Sage-Grouse Habitat Management Areas, Alternative 6
- 2.7 Greater Sage-Grouse Biologically Significant Units, Alternative 2
- 2.8 Fluid Minerals (Oil and Gas), Alternative 1
- 2.9 Fluid Minerals (Oil and Gas), Alternative 2
- 2.10 Fluid Minerals (Oil and Gas), Alternative 3
- 2.11 Fluid Minerals (Oil and Gas), Alternative 4
- 2.12 Fluid Minerals (Oil and Gas), Alternative 5
- 2.13 Fluid Minerals (Oil and Gas), Alternative 6
- 2.14 Geothermal, Alternative 1
- 2.15 Geothermal, Alternative 2
- 2.16 Geothermal, Alternative 3
- 2.17 Geothermal, Alternative 4
- 2.18 Geothermal, Alternative 5
- 2.19 Geothermal, Alternative 6
- 2.20 Non-Energy Leasable Minerals, Alternative 1
- 2.21 Non-Energy Leasable Minerals, Alternative 2
- 2.22 Non-Energy Leasable Minerals, Alternative 3
- 2.23 Non-Energy Leasable Minerals, Alternative 4
- 2.24 Non-Energy Leasable Minerals, Alternative 5
- 2.25 Non-Energy Leasable Minerals, Alternative 6
- 2.26 Salable (Mineral Materials), Alternative 1
- 2.27 Salable (Mineral Materials), Alternative 2
- 2.28 Salable (Mineral Materials), Alternative 3
- 2.29 Salable (Mineral Materials), Alternative 4
- 2.30 Salable (Mineral Materials), Alternative 5
- 2.31 Salable (Mineral Materials), Alternative 6
- 2.32 Locatable Minerals, Alternative 1
- 2.33 Locatable Minerals, Alternative 2
- 2.34 Locatable Minerals, Alternative 3
- 2.35 Locatable Minerals, Alternative 4
- 2.36 Locatable Minerals, Alternative 5
- 2.37 Locatable Minerals, Alternative 6
- 2.38 Major Rights-of-Way, Alternative 1
- 2.39 Major Rights-of-Way, Alternative 2
- 2.40 Major Rights-of-Way, Alternative 3
- 2.41 Major Rights-of-Way, Alternative 4
- 2.42 Major Rights-of-Way, Alternative 5
- 2.43 Major Rights-of-Way, Alternative 6
- 2.44 Wind Energy Management, Alternative 1

- 2.45 Wind Energy Management, Alternative 2
- 2.46 Wind Energy Management, Alternative 3
- 2.47 Wind Energy Management, Alternative 4
- 2.48 Wind Energy Management, Alternative 5
- 2.49 Wind Energy Management, Alternative 6
- 2.50 Solar Energy Management, Alternative 1
- 2.51 Solar Energy Management, Alternative 2
- 2.52 Solar Energy Management, Alternative 3
- 2.53 Solar Energy Management, Alternative 4
- 2.54 Solar Energy Management, Alternative 5
- 2.55 Solar Energy Management, Alternative 6
- 2.56 Designated Utility Corridors, Alternative 1
- 2.57 Designated Utility Corridors, Alternative 2
- 2.58 Designated Utility Corridors, Alternative 3
- 2.59 Designated Utility Corridors, Alternative 4
- 2.60 Designated Utility Corridors, Alternative 5
- 2.61 Designated Utility Corridors, Alternative 6

- 3.1 Greater Sage-Grouse Breeding Population Index Model
- 3.2 Average Annual Rate of Change in Greater Sage-Grouse Abundance
- 3.3 Watch and Warning Signals for Greater Sage-Grouse Population Declines, 1995-2019
- 3.4 Distinct Genetic Greater Sage-Grouse Groups
- 3.5 Greater Sage-Grouse Genetic Connectivity
- 3.6 Greater Sage-Grouse Population Clusters Declining in Genetic Diversity
- 3.7 Greater Sage-Grouse Habitat Assessment Framework, Mid-Scale Areas (Level 2)
- 3.8 Greater Sage-Grouse Habitat Assessment Framework, Fine-Scale Areas (Level 3)
- 3.9 Greater Sage-Grouse Breeding Habitat Model
- 3.10 Probability of Greater Sage-Grouse Lek Persistence
- 3.11 Modeled Potential Change in Sagebrush Biomass (2030-2060)
- 3.12 Modeled Potential Change in Sagebrush Cover (2011-2040)
- 3.13 Vegetation Communities
- 3.14 Conifer Canopy Cover
- 3.15 Acres Burned Over the Past 10 Years (2012-2022)
- 3.16 Existing Disturbances
- 3.17 Wind Potential
- 3.18 Existing Oil and Gas Leases
- 3.19 Oil and Gas Occurrence Potential
- 3.20 Existing Geothermal Leases
- 3.21 Geothermal Potential
- 3.22 BLM National Landscape Conservation System (NLCS), Other Related Lands
- 3.23 Wild Horse and Burro Herd Management Areas

Surface Management Agencies in the Planning Area



No decisions are being made on National Forest System lands as part of this BLM planning effort.

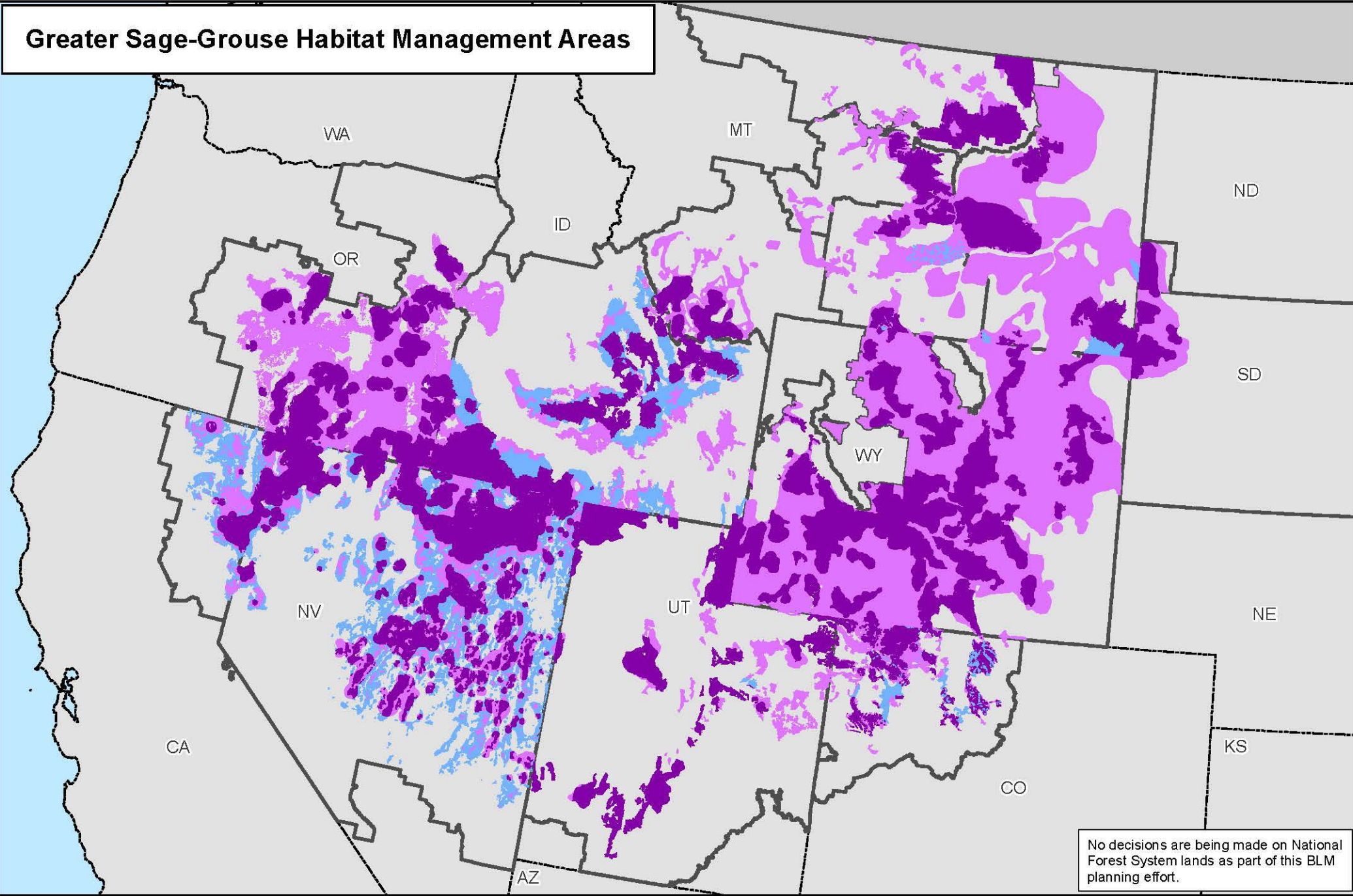
Map 1.1a

Legend			
	Planning Area Extent		Private
	State Boundaries		US Forest Service
	Bureau of Land Management		Other Federal Lands
			State
			Local Government
			Other / Unknown



No warranty is made by the Bureau of Land Management (BLM). The accuracy, reliability, or completeness of these data for individual use or aggregate use with other data is not guaranteed.

Greater Sage-Grouse Habitat Management Areas

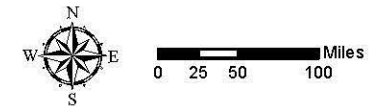


No decisions are being made on National Forest System lands as part of this BLM planning effort.

Map 1.1b

Legend

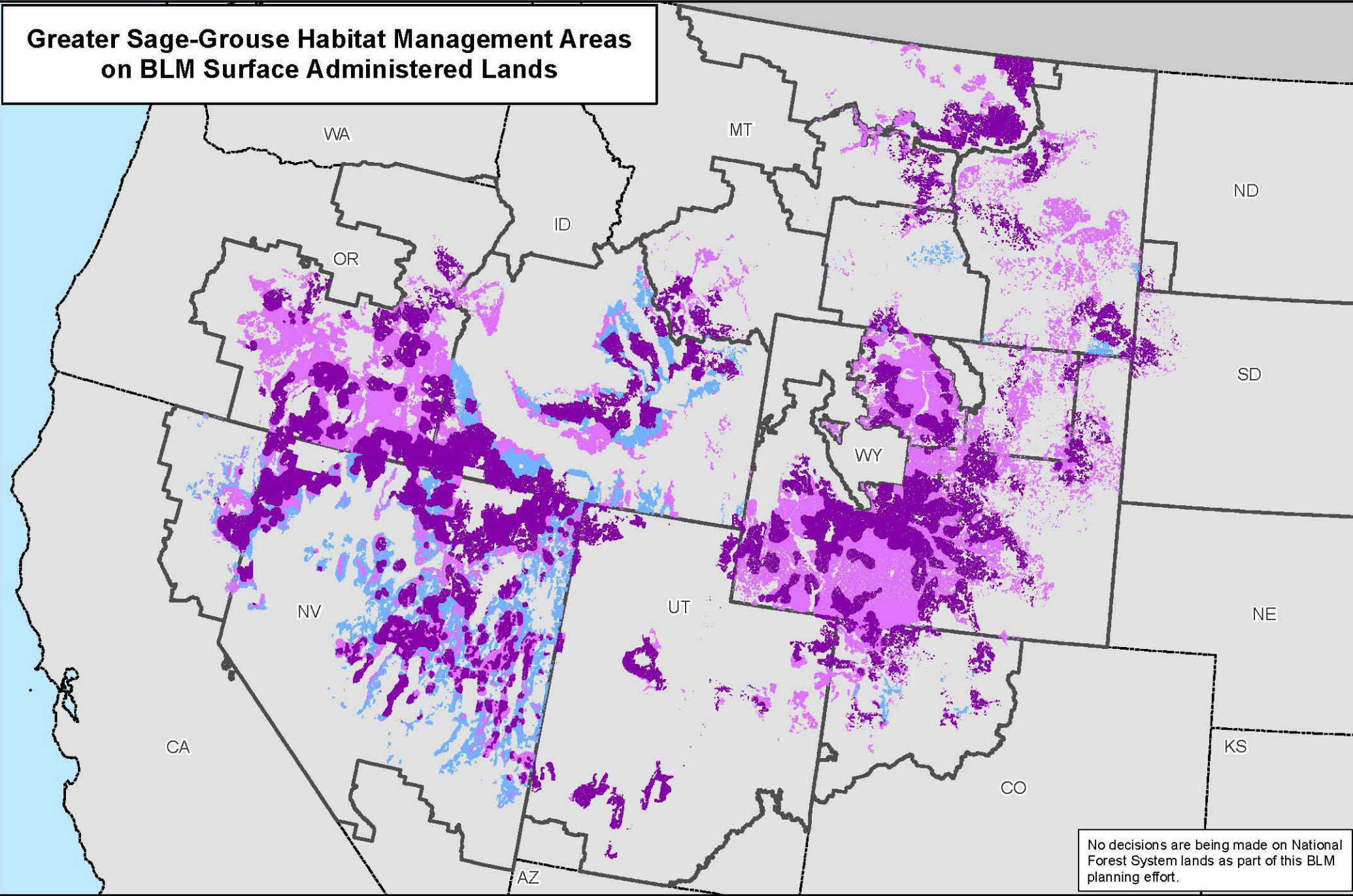
 Priority Habitat Management Areas	 Planning Area Extent
 General Habitat Management Areas	 State Boundaries
 Other Habitat Management Areas	



No warranty is made by the Bureau of Land Management (BLM). The accuracy, reliability, or completeness of these data for individual use or aggregate use with other data is not guaranteed.



Greater Sage-Grouse Habitat Management Areas on BLM Surface Administered Lands

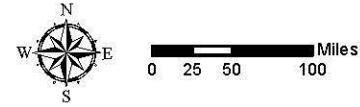


No decisions are being made on National Forest System lands as part of this BLM planning effort.

Map 1.1c

Legend

	Priority Habitat Management Areas		Planning Area Extent
	General Habitat Management Areas		State Boundaries
	Other Habitat Management Areas		



Scale: 0 25 50 100 Miles



No warranty is made by the Bureau of Land Management (BLM). The accuracy, reliability, or completeness of these data for individual use or aggregate use with other data is not guaranteed.